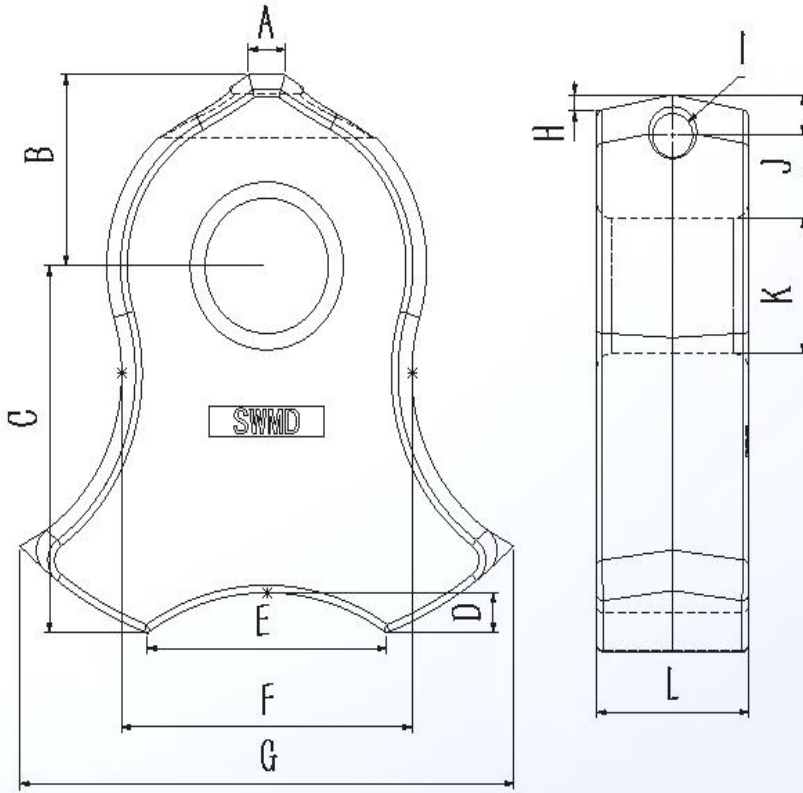


# 南京启明机械有限公司

## Nanjing Qiming Machinery Co., Ltd.

### 外观及尺寸检验DIMENSION INSPECTION REPORT

Customer客户名	/		Report No. 报告编号:	20231020-1
PO No.订单号:	N2308042		Prod batch No. 生产订单号:	N2308042
Stock No. 客户货号:	SWMD		Product name 产品名称:	双梯度甩锤
Order Q'ty 订单数量:	84	PCS	DWG NO.图号:	S-S8007-MD
Q'ty Inspected 抽检数量:	8	PCS	Prod Marking 产品标识:	SWMD



Position No.	A	B	C	D	E	F	G	H	I	J	K	L				
Dwg(mm)	32 ±1.8	152.4 ±2.5	292.86 ±3.1	32 ±1.8	209 ±2.5	254 ±3.1	432 ±3.5	13 ±1.5	φ35 ±1.8	32.5 ±1.8	φ108 ±2	133 ±2.5				
Prod 1#	32.6	152.7	293	32.5	209	255.1	432.6	14.1	35.7	32.8	109	132.5				
Prod 2#	32.7	152.6	292.5	32.4	209.2	255	432.7	14.2	35.6	33.1	108.6	132.5				
Prod 3#	32.7	152.5	293.3	31.8	208.9	254.7	432.4	13.9	35.5	32.8	109.1	132.1				
Prod 4#	32.9	152.5	293.4	32.3	209	255	432.6	14	35.8	33	108.9	132				
Prod 5#	32.5	152.7	293	32.5	209.5	255.3	432.5	13.6	35.3	32.6	109	132				
Prod 6#	32.8	153	293	32.5	209.6	255.3	432	13.8	35.5	32.8	109.5	132.6				
Prod 7#	32.6	152.8	292.6	32.6	209.4	255	432.4	14	35.4	33	109.2	132.4				
Prod 8#	33	153.1	292.9	32.2	209.5	254.5	432.6	14	35.6	33	109	132.5				

Inspector: 王明飞 #####

Checked by 10/21/23

杨国峰

南京启明机械有限公司

Nanjing Qiming Machinery Co., Ltd.

化学成分CHEMICAL COMPOSITION REPORT

Customer客户名		/					Report No. 报告编号:		20231014-01				
PO No.订单号:		N2308042					Prod batch No. 生产订单号:		N2308042				
Stock No. 客户货号:		SWMD					Mtrl code 材料牌号:		550MD				
Order Q'ty 订单数量:		84					DWG NO.图号:		S-S8007-MD				
Unit Mass 单重(kg):		101.8					Furnace No. 炉号:		1A-2000 KG				
Total mass 总重量(kg):		8551.2					Melting batches 熔炼总批次		1				
Melting No.	C	Si	Mn	Cr	Mo	Ni	P	S	Al		Fe	Melting Date	Conclusion
熔炼批次	0.49-0.54	1.0-1.3	0.4-0.6	0.8-1.0	0.4-0.5	1.0-1.2	<0.018	<0.015	<0.03		余量base	熔炼日期	Passed/Failed
20231012-01	0.5	1.21	0.544	0.907	0.43	1.07	0.0152	0.011	0.022		Base	23/10/12	Passed
20231012-02	0.52	1.18	0.506	0.885	0.451	1.11	0.0146	0.0098	0.024		Base	23/10/12	Passed
20231012-03	0.528	1.09	0.528	0.905	0.46	1.09	0.0148	0.012	0.019		Base	23/10/12	Passed
20231013-01	0.524	1.15	0.556	0.912	0.458	1.13	0.0150	0.0125	0.025		Base	23/10/13	Passed
20231013-02	0.53	1.16	0.496	0.892	0.46	1.08	0.0161	0.0108	0.023		Base	23/10/13	Passed
Inspetor	Lu Jiali	卢佳丽					Checked by: Yang Chuangxiang					Report date	2023/10/14
												报告日期	

杨创翔

南京启明机械有限公司  
Qiming Machinery Co., Ltd.


硬度检验报告 HARDNESS INSPECTION REPORT

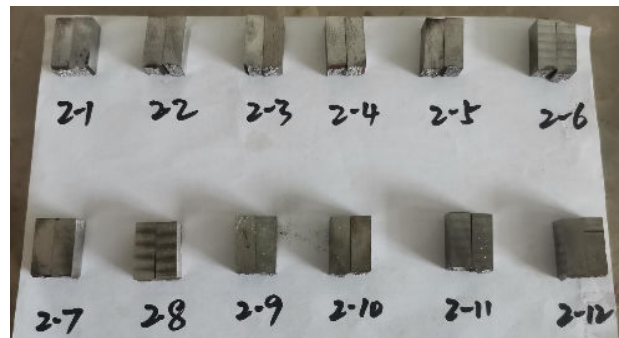
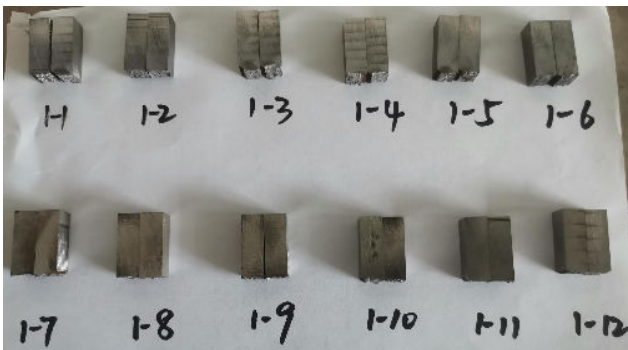
Customer 客户名	/		Report No. 报告编号:	20231020-02
PO No. 订单号:	N2308042		Prod batch No. 生产订单号:	N2308042
Stock No. 客户货号:	SWMD		Product name 产品名称:	
Order Q'ty 订单数量:	84	PCS	DWG NO. 图号:	S-S8007-MD
Q'ty Inspected 抽检数量:	8	PCS	Prod Marking 产品标识:	SWMD
Heat No. 热处理 批号	材质 Material		轴孔区硬度 Pin Hole Area HB330-HB400	工作区硬度 Work Area HB550-HB600
20231016-01	550MD		375	578
20231016-01	550MD		380	585
20231016-01	550MD		376	588
20231016-01	550MD		370	586
20231017-03	550MD		378	590
20231017-03	550MD		385	585
20231017-03	550MD		377	580
20231017-03	550MD		383	585
Inspector: Wang Mingfei 王明飞		Checked by: Yang Chuangxiang 杨创翔		2023/10/20

**南京启明机械有限公司**  
**Qiming Machinery Co., Ltd.**

冲击检验报告 Charpy Impact Testing

Customer客户名	/	Report No. 报告编号:	20231023-01
PO No.订单号:	N2308042	Prod batch No. 生产订单号:	N2308042
Stock No. 客户货号:	SWMD	Product name 产品名称:	双梯度甩锤 Alloy steel Shredder hammer
Order Q'ty 订单数量:	84 PCS	DWG NO.图号:	S-S8007-MD

常温V型冲击/J V Notch Room Temperature		低温-40℃V型冲击/J V Notch Temperature -40℃		测试样品 Photo of sample
试样编号 Sample No.	结果 Test result	试样编号 Sample No.	结果 Test result	
1-1	12.3	2-1	9.3	
1-2	11.6	2-2	9.1	
1-3	12.1	2-3	9.5	
1-4	11.8	2-4	9.2	
1-5	10.6	2-5	8.3	
1-6	9.2	2-6	7.6	
1-7	7.5	2-7	4.7	
1-8	8	2-8	5.2	
1-9	8.2	2-9	5.3	
1-10	7.6	2-10	4.8	
1-11	8.5	2-11	5.3	
1-12	7.8	2-12	5	



南京启明机械有限公司

渗透探伤报告

PENETRANT TESTING IN SPECTION REPORT

报告编号: Report No.	20231020-03	试件数量: Quantity:	84
试件名称: NAME:	锤头 Shredder hammer	试件图号: DWG.NO:	SWMD
探伤结论: Conclusion:	合格 <b>PASSED</b>		
探伤 (Inspector):	吴宇豪 WuYuhao	报告 (Report):	YangChuangxiong
报告 (Report):	YangChuangxiong	审核 (Checked):	XiongZhijun
报告日期 (Date):	2023.10.21		



# 南京启明机械有限公司

## 超声波探伤报告

### ULTRASONIC EXAMINATION REPORT

报告编号: Report No.	20231020-04	试件数量: Quantity:	84
试件名称: NAME:	锤头 Shredder hammer	试件图号: DWG.NO:	SWMD
设备型号: Model of Equipaent:	3600S	探头型号: Model of probe:	5P $\phi$ 20
耦合剂: Couplant:	机油 Machine oil	表面状态: Surface states:	毛坯 rough
灵敏度: Sensitivity:	$\phi$ 3		
验收标准: Standard:	EPS-6563 ASTM A609 II级		
探伤结论: Conclusion:	合格 PASSED		
探伤 (Inspector):	吴宇豪 WuYuhao		
报告 (Report):	YangChuangxiong	审核 (Checked):	XiongZhijun
报告日期 (Date):	2023.10.21		



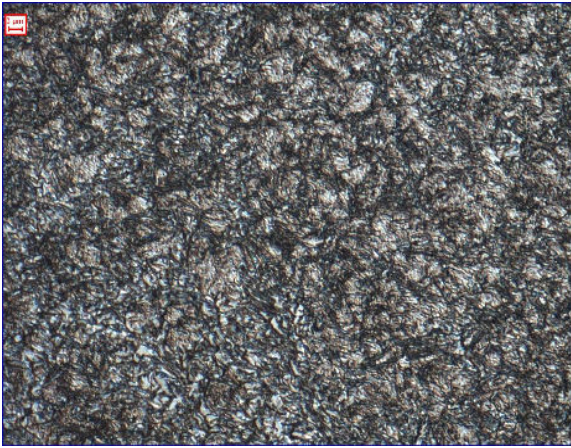
南京启明机械有限公司

Nanjing Qiming Machinery Co., Ltd.

金相检验报告 METALLOGRAPHY INSPECTION REPORT

Customer 客户名	/	Report No. 报告编号:	20231023-01
PO No. 订单号:	N2308042	Prod batch No. 生产订单号:	N2308042
Stock No. 客户货号:	SWMD	Product name 产品名称:	双梯度甩锤 Shredder hammer
Order Q'ty 订单数量:	84 PCS	DWG NO. 图号:	S-S8007-MD

1#



2#

